

Correction to: Application of Mathematical Modelling as a Tool to Analyze the EEG Signals in Rat Model of Focal Cerebral Ischemia

S. Paul¹ · P. Bhattacharya² · A. K. Pandey¹ · R. Patnaik¹

Published online: 30 April 2020
© The Institution of Engineers (India) 2020

Publisher's Note Springer Nature remains neutral with regard to jurisdictional claims in published maps and institutional affiliations.

Correction to: J. Inst. Eng. India Ser. B
(January–March 2014) 95(1):23–27
<https://doi.org/10.1007/s40031-014-0072-5>

In the original publication of the article, figure 1 was published incorrectly. The corrected figure is given below (Fig. 1):

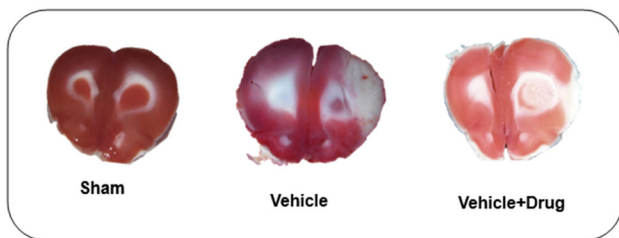


Fig. 1 TTC stained 2 mm coronal rat brain sections of Sham, Vehicle and Piroxicam (10 mg/kg b.w) treated with 1/24 h I/R injury

The original article can be found online at
<https://doi.org/10.1007/s40031-014-0072-5>.

✉ S. Paul
sudip.paul.bhu@gmail.com

¹ School of Biomedical Engineering, Indian Institute of Technology, Banaras Hindu University, Varanasi, Uttar Pradesh 221005, India

² Department of Neurology, Leonard M. Miller School of Medicine, University of Miami, Miami, FL 33136, USA